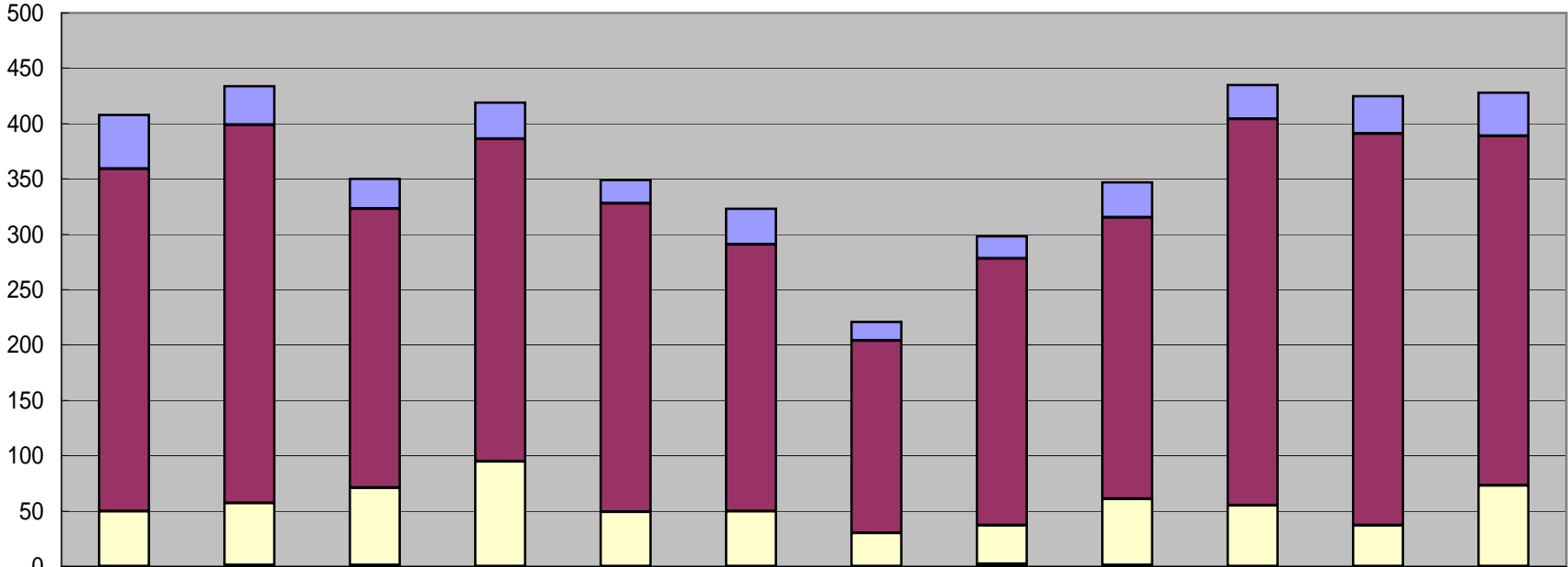


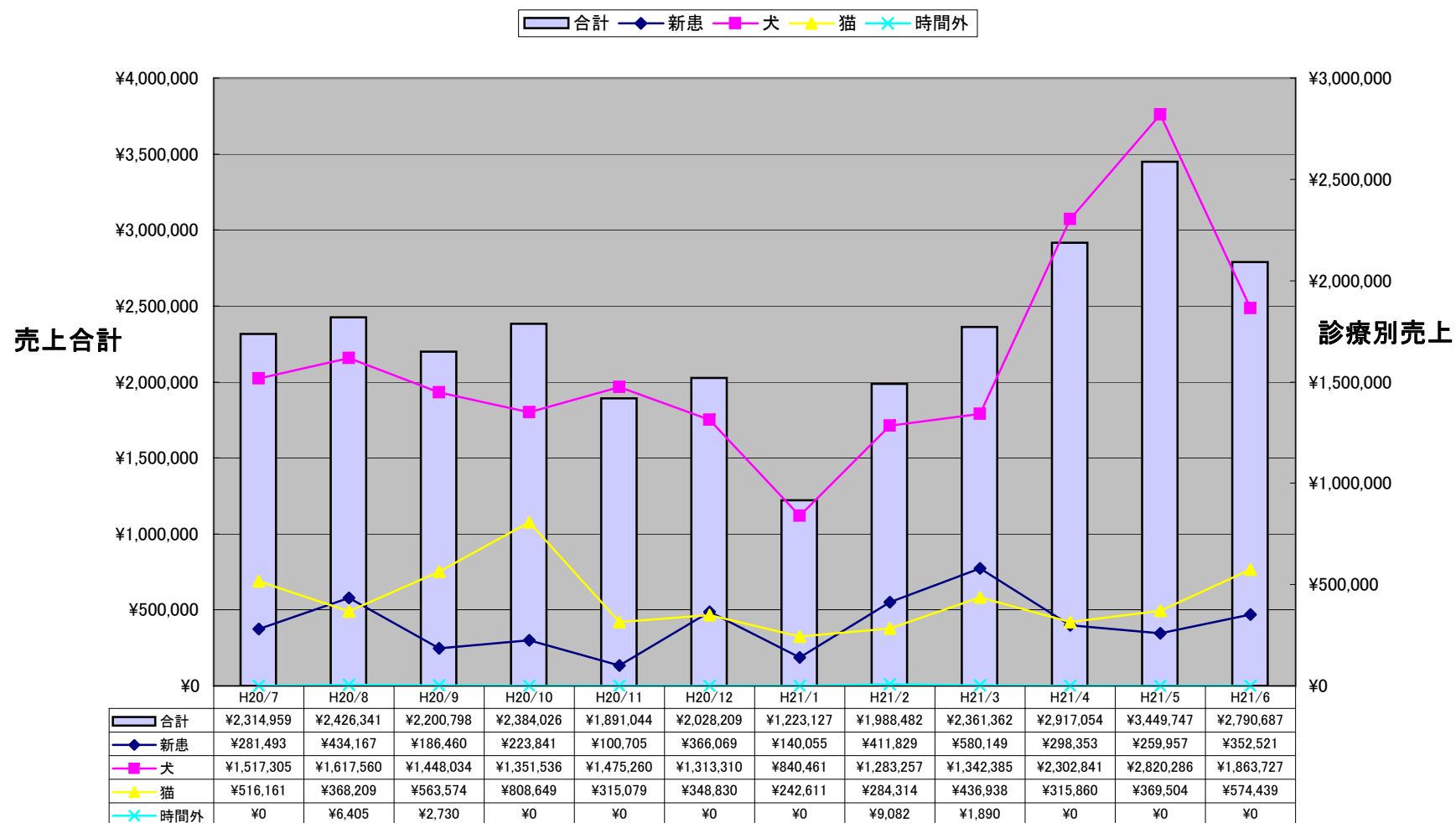
ファイト動物病院患者数推移表 H20/7 ~ H21/6

□時間外 □猫 ■犬 □新患



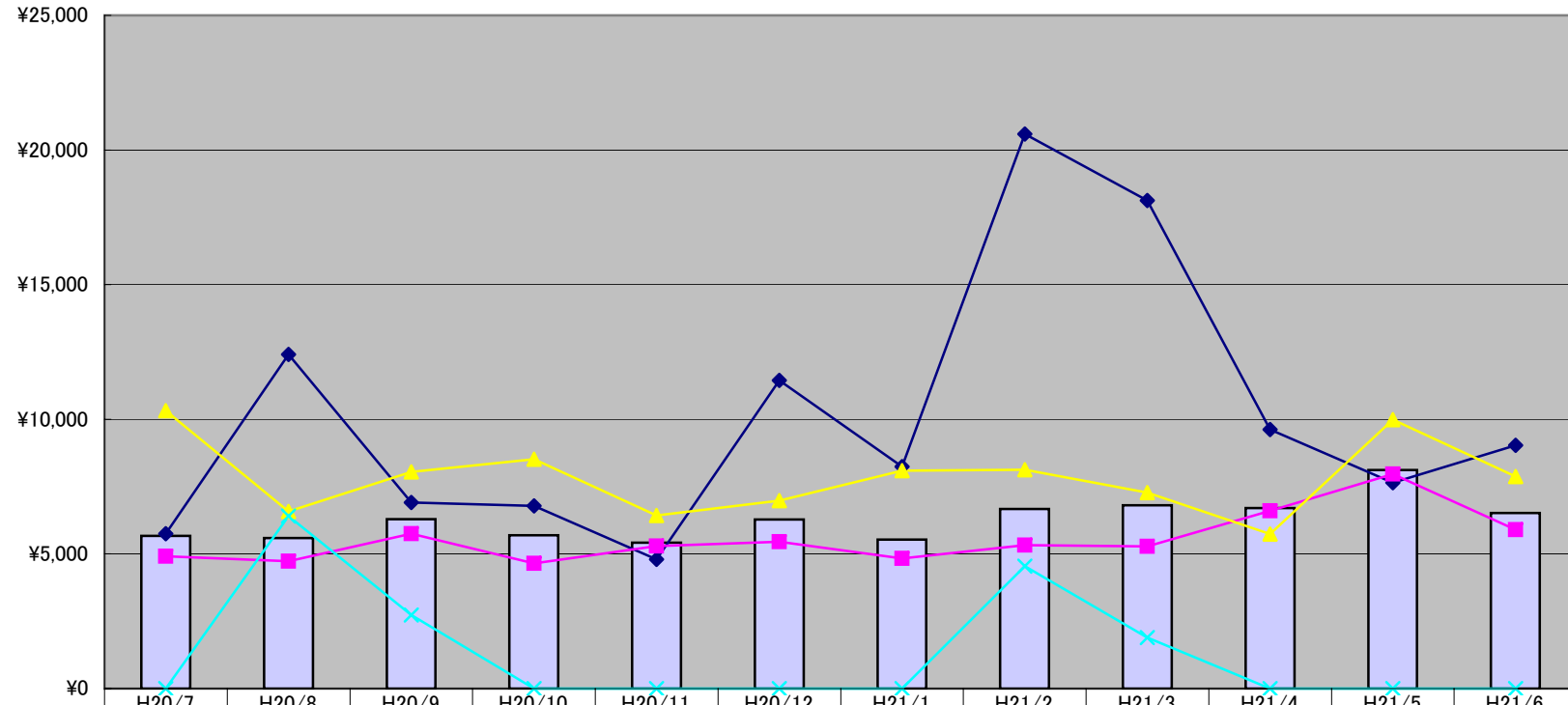
	H20/7	H20/8	H20/9	H20/10	H20/11	H20/12	H21/1	H21/2	H21/3	H21/4	H21/5	H21/6
■新患	49	35	27	33	21	32	17	20	32	31	34	39
■犬	309	342	252	291	279	241	174	241	254	349	354	316
□猫	50	56	70	95	49	50	30	35	60	55	37	73
□時間外	0	1	1	0	0	0	0	2	1	0	0	0

ファイト動物病院売上推移図表H20/7～H21/6



ファイト動物病院診療単価推移図表H20/7～H21/6

病院全体 新患 犬 猫 時間外



	H20/7	H20/8	H20/9	H20/10	H20/11	H20/12	H21/1	H21/2	H21/3	H21/4	H21/5	H21/6
病院全体	¥5,674	¥5,591	¥6,288	¥5,690	¥5,418	¥6,279	¥5,535	¥6,673	¥6,805	¥6,706	¥8,117	¥6,520
新患	¥5,745	¥12,405	¥6,906	¥6,783	¥4,795	¥11,440	¥8,239	¥20,591	¥18,130	¥9,624	¥7,646	¥9,039
犬	¥4,910	¥4,730	¥5,746	¥4,644	¥5,288	¥5,449	¥4,830	¥5,325	¥5,285	¥6,598	¥7,967	¥5,898
猫	¥10,323	¥6,575	¥8,051	¥8,512	¥6,430	¥6,977	¥8,087	¥8,123	¥7,282	¥5,743	¥9,987	¥7,869
時間外	¥0	¥6,405	¥2,730	¥0	¥0	¥0	¥0	¥4,541	¥1,890	¥0	¥0	¥0